

Delivering a fair and inclusive just transition to net zero

Legacy Report 2023





**An opportunity to
deliver community
benefits that will
last for generations**

Foreword

The Kype Muir Community Partnership (KMCP) has been working together to lead the delivery of Kype Muir Wind Farm's community benefit since it was developed in 2018.

The scope of the KMCP's work has continued to grow in that time, and now with Kype Muir Extension coming online, there will be an even bigger opportunity to deliver community benefits for local people in the towns and villages around Kype Muir that will last for generations.

Key to this success has been the chairman of the KMCP, George Smith.



“Continuing to grow and forge stronger partnerships has meant taking on more responsibility with community funding throughout the local area, and this has had a real impact with the level of project we're able to take forward.

The continued success of the KMCP speaks volumes to what is possible when local communities come together to make their own decisions, independently.”

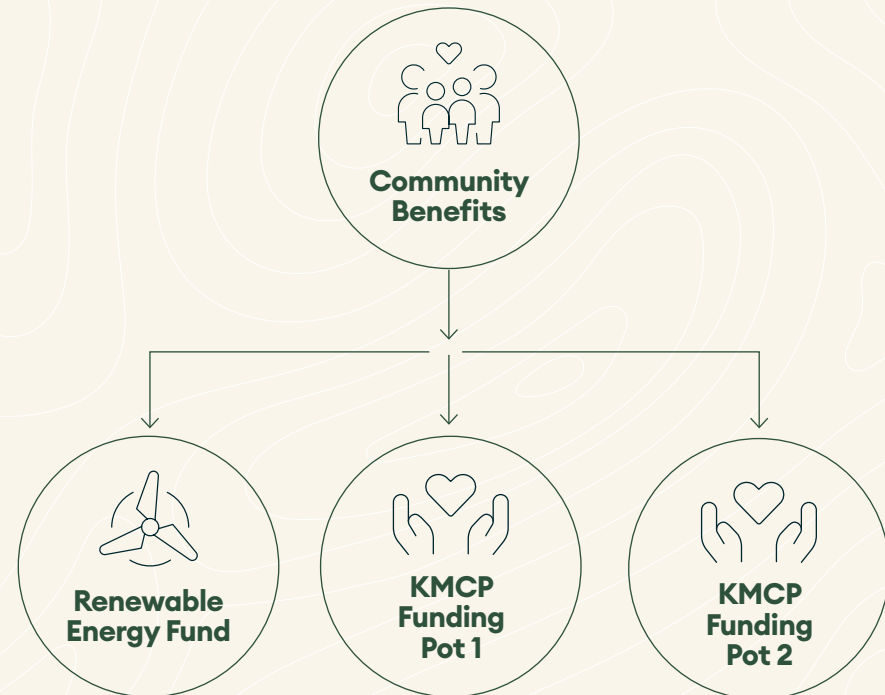
GEORGE SMITH

Chair, Kype Muir Community Partnership

Building community value together to tackle the issues that matter the most to local people

Together, Kype Muir Wind Farm and Kype Muir Extension will generate around £778,000 per year, rising each year with inflation. This is split between the KMCP and South Lanarkshire Council's Renewable Energy Fund (REF), and has previously been used to support a jobs and skills program in the local area.

The KMCP has two funding pots, pot one which works with smaller projects and pot two which is designed to tackle larger, strategic projects which benefit the wider region. With both pots, the KMCP's goal is to effectively distribute community benefits from the wind farm to deliver the community action plans of the five areas represented by the panel.



Legacy Report 2023

What benefits has the fund delivered for local communities?

The key issues tackled are a result of the common focus on locally developed community action plans, local priorities and individual projects brought to the KMCP by the wider community.

As the KMCP is community-led, it is uniquely well-placed to address local issues effectively and react quickly to projects and suggestions with an informed decision on allocation.

TOP THREE KEY ISSUES: Running totals:



£114,202

Community support & development



£80,740

Health, wellbeing & mental health



£93,841

Disability and access issues

YEAR	GRANTS AWARDED	AMOUNT AWARDED	PAID INTO FUND
2019	5	£25,300	£151,969.50
2020	26	£99,761	£156,176.03
2021	11	£59,730	£158,731.93
2022	12	£180,089	£173,162.10
2023	11	£95,352	£194,940
Lifetime total	71	£460,232	

Sustainable development goals

A helpful way to view the impact of the funding is to use the United Nations Sustainable Development Goals (SDG) as a framework.

This is a commonly used language for funding bodies and maps out 17 interlinked goals designed to act as a blueprint to achieving a better and more sustainable future for everyone.

Since coming together, the KMCP has contributed...



Beneficiaries

By responding to local community priorities, which differ throughout the region, the KMCP can ensure that community benefits are felt by those groups who need it most.

This often means support for more vulnerable members of the community with services to boost social inclusion, access, and mobility. At the same time, significant amounts of money can be seen to be benefiting young people in the area – helping to make the region a better place to grow up and improving opportunities for those that live here. Using local knowledge, and aligning support to local community action plans – the KMCP can ensure that funding is delivered to beneficiaries who will feel the greatest benefit.

Since coming together, the KMCP has contributed...



Case Study

Lesmahagow Highland Games

Founded in 1960 and running almost continuously since then, the Lesmahagow Highland games are a central part of the community calendar every summer, drawing in thousands of visitors. In 2023, the games were supported with a grant of £3,860, which helped organisers to purchase vital new equipment like gazebos, picnic benches and tables.

Attractions include local pipe bands, float processions making their way through the town before finishing in The Glebe for a crowning ceremony, food, drink and traditional competitions like pipe band performances, junior athletics, wrestling, dancing and gymnastics. Support like this is essential for keeping the Highland Games open and accessible to the community year on year – with costs significantly increasing for organisers in recent years.

“ Our Highland games are a highlight of the summer calendar, not only for the community here in Lesmahagow, but for many of the surrounding villages. Support like this is vital to keep them running smoothly now, as well as building for the future to ensure they can be enjoyed for years to come. ”

MARK WAUGH

Lesmahagow Community Council



COMMUNITY COUNCIL AREA: Lesmahagow - lesmahagowcc@outlook.com

AMOUNT: £3,860

KEY ISSUE TACKLED: Stronger communities/community support & development

SECONDARY ISSUES: Accessibility



Case Study

Sandford Village Hall

This integral village hall in South Lanarkshire has been saved from falling into disrepair after receiving £100,000 worth of grants including £45,000 from the KMCP. Major funding for the project from both the Kype Muir Wind Farm Community Partnership Fund (KMCP) and also from the Renewable Energy Fund (REF) which is administered by South Lanarkshire Council.

“ This integral community hub is a wonderful project that is vital to the community. Thanks to this work, it will improve the everyday lives of local people both now and well into the future. ”

MARGARET COOPER

Cllr for Avondale & Stonehouse and Provost for SLC

“ It’s hugely rewarding to support this project along with Sandford & Upper Avondale Community Council, which is such an important part of village life. It is great to see and one of many projects in South Lanarkshire which will give the local community the chance to thrive for many more years to come now that their local hub has been completely transformed and revitalised. ”

CHRIS CASSELS

Sandford & Upper Avondale Community Council



COMMUNITY COUNCIL AREA: Sandford & Upper Avondale - sandfordanduacc@gmail.com

AMOUNT: £45,000

KEY ISSUE TACKLED: Disability & access issues

SECONDARY ISSUES: Stronger communities & community development



Case Study

Stonehouse Men's Shed

Stonehouse Men's Shed, started formally in 2018 as a registered charity, has transformed an abandoned public toilet into a safe community space.

The group, which was previously meeting in the limited space of the local community centre, leased the disused building in the centre of the village, then converted it into fit for purpose club rooms, providing local men with a place to socialise and converse.

Stonehouse Men's Shed, which has more than 40 members, is now going from strength to strength, continuously growing to offer more men social and hobby space – it was the first Men's Shed in South Lanarkshire that boasted its own bespoke building.

These positive impacts can include increased confidence and sense of purpose, with 89% of regular 'Men's Shedders' noticing a decrease in depression and a 75% decrease in anxiety.

The group is now planning to build upon its outdoor facilities as part of the next stage of refurbishment.

“ The Men's Shed is a very worthwhile project that benefits not only individuals, but the community at large. Funding from the wind farm is crucial to the development of projects like this. ”

ROBERT CRAIG

Stonehouse Community Council



COMMUNITY COUNCIL AREA: Stonehouse - stonehousecommunitycouncil@gmail.com

AMOUNT: £4,500

KEY ISSUE TACKLED: Arts/culture and heritage

SECONDARY ISSUES: Education and learning, improved surroundings and environment, health and wellbeing, mental health



Case Study

Climate Action Strathaven

Climate Action Strathaven (CAS) first launched its bus service in October 2022 after concerns of poor transport links isolating elderly community members and impacting student’s university commutes. Thanks to KMCP funding CAS has now expanded offering twice as many services between Strathaven, Stonehouse and Glasgow.

Between opening and June 2023, the service has issued over 42,000 tickets and saved 510,000 car miles – equivalent to 325 tonnes of CO2.

“ The benefits the bus service has brought our community cannot be understated, it has been genuinely transformative. There has been a need for this service for a very long time in South Lanarkshire and we are really pleased we were not only able to set up a bus service but we’re now in a position to expand. ”

ALISON HARLEY
Programme Manager for
Climate Action Strathaven

- COMMUNITY COUNCIL AREA:** Strathaven & Glassford - strathavencommcouncil@gmail.com
- AMOUNT:** £19,500
- KEY ISSUE TACKLED:** Rural issues
- SECONDARY ISSUES:** Education, learning and training & stronger communities





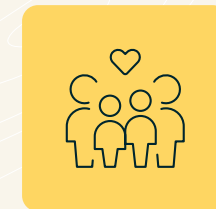
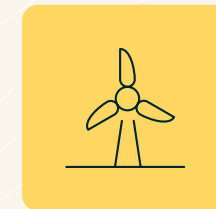
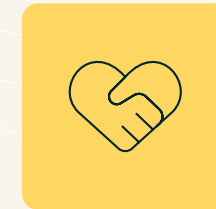
**The additional funding
from Kype Extension
will amount to a further
£168,000 a year**

Looking to the future

Building on the success of the past year, the KMCP can confidently look to the future with the intention of continued partnership with the local authority, community councils, grassroots organisations and other stakeholders to ensure that available funding works harder for the local community.

By separating the funding streams to tackle a different types of projects, the KMCP is ensuring that large projects will get the kind of specialist support they need to not only get started, but more importantly – get finished.

The additional funding from Kype Extension will amount to a further £168,000 a year, with this linked to inflation to ensure that the value to communities is consistent. Further intentions to partner with other funds, including with the local authority, mean that this money can be used to benefit the entire region and take on larger, regenerative projects.



Banks Renewables was acquired by Brookfield Asset Management, leading global alternative asset manager, in a transaction that was announced in October 2023 and completed in December 2023. The business has now rebranded as OnPath Energy. We may have changed our name but our business will be led by the same team of people you know and trust who will listen your voice and care about your point of view. OnPath Energy represents the journey we're on with our customers, landowners and local communities as we continue to honour the long term commitments we have made and the benefits we bring on our journey to net zero.



How can you get involved?

There have been some great examples of the KMCP working towards the delivery of their individual local community action plans and now we have a bigger opportunity to enhance this work with further large scale projects.

Local Ambition

Grassroots community causes, ideas and projects have been at the heart of the KMCP since it was founded and we've found that the projects with the most impact involving the KMCP have been the result of ideas from local people.

The KMCP is eager to take on projects of all sizes and would particularly like to see larger, more ambitious projects being brought forward to match the ambition of the local communities and tackle the most challenging issues local people in the area are facing. Supporting large scale projects is central to what the KMCP wants to achieve in the future and there has already been some progress in identifying opportunities to deliver positive change in the local area.

Themes such as thermal efficiency in community buildings, enhancing nature, encouraging local wildlife and celebrating local heritage are common talking points, but we need your help in making sure these are tackled in the right way, driven by the voices of local communities.

Working with you

If you have a desire to see your project supported by the KMCP, we'll work with you to help explore your next steps and shine a light on what we know can be a daunting process at the start of your journey. Your first port of call should be to speak to your local community council before getting in touch with a fund manager or a member of the team at OnPath, outlining a few details of your project or cause and how funding from the KMCP could help further your aims in the community.



apply@onpathcommunityfund.co.uk



Partnerships and community manager:
aileen.mccreadie@onpathenergy.com


Further details and information on how to apply can also be found here:
www.onpathenergy.com/communities/funds/

Together to a greener future





 kypemuir@onpathenergy.com

 apply@onpathcommunityfund.co.uk

OnPath Energy Limited, Chase House, 4 Mandarin Road,
Houghton le Spring, DH4 5RA
Registered in England & Wales No. 02387216



T: +44 330 335 8010
W: onpathenergy.com
E: hello@onpathenergy.com