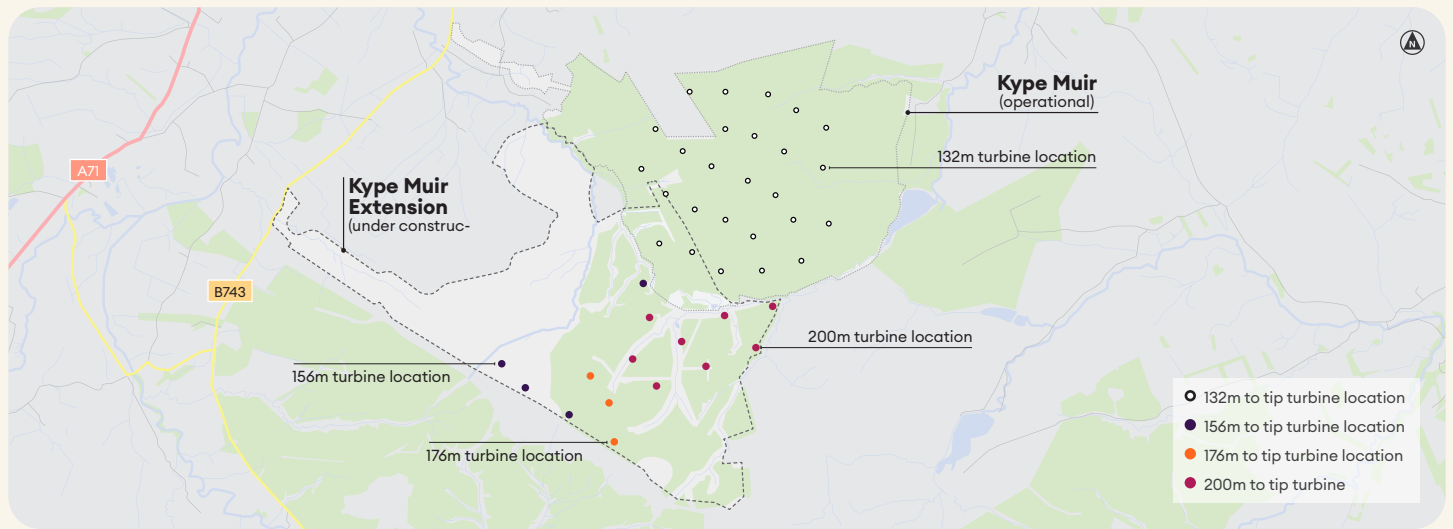


# Kype Muir Wind Farm & Extension

Generating green electricity. Generating local benefits.

## Turbine locations



## Kype Muir key facts

Number of turbines: 26

Turbine dimensions: 132m to blade tip

Lifespan: 25 years in operation

Current land use: Commercial forestry

Location: Situated in the Kype Forest approximately 5km south of Strathaven

Potential amount of energy generated: Installed capacity of up to 88.4MW, which will provide electricity for approximately 70,000 homes.

## Kype Muir Extension key facts

Number of turbines: 15

Turbine dimensions:

4 x 156m to blade tip / 3 x 176m to blade tip

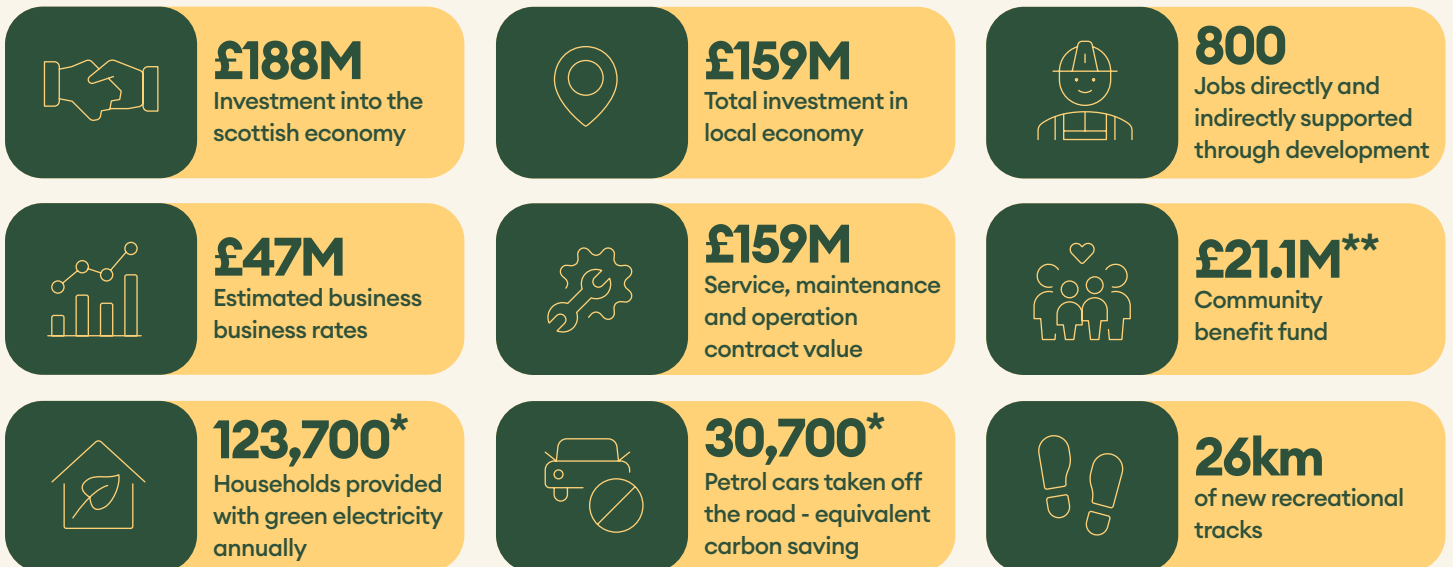
8 x 200m to blade tip - The 200m turbines are the tallest and most efficient onshore turbines ever erected in the UK.

Lifespan: 30 years in operation

Potential amount of energy generated: Installed capacity of up to 67.2MW, which could provide electricity for approximately 53,700 homes.

Grid connection: The connection to the UK grid is live, several turbines have been connected and the site will be fully operational in early 2023.

## Combined, social, economic and environmental benefits



Figures based on a total combined output of 155.6MW. \*Sources can be found at [www.banksgroup.co.uk/projects/renewables/kype-muir-extension/scheme-details-2](http://www.banksgroup.co.uk/projects/renewables/kype-muir-extension/scheme-details-2)  
 \*\*Based on £5,000 per MW installed per annum. 25 years for Kype Muir and 30 years for Kype Muir Extension